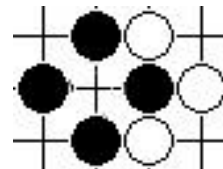


## Wanstead Go Tournament



***Saturday 8 November 2008***

VENUE: Wanstead House Community Hall,  
21 The Green, Wanstead, London E11 2NT

FORMAT: Four round McMahon tournament  
50 minutes each (sudden death – no overtime).

Due to popular acclaim at our 2007 tournament, we are sticking with four games. However, due to constraints on the hall, we need to be very strict about times. Please cooperate by registering promptly (don't all arrive at the last minute) and starting your games on time.

TIMES: Registration from 0900 TO 0930  
DEADLINE FOR ENTRIES 0930 SHARP

First round	0945 - 1125
Second round	1145 - 1325
Third round	1400 - 1540
Last round	1600 - 1740
Prize giving	1800

VACATE HALL BY 1815 SHARP

### REFRESHMENTS / LUNCH:

Free tea, coffee and biscuits will be available all day as usual. Lunch is available from nearby pubs and shops, but note that the lunch break is short, so consider bringing sandwiches.

### ENTRY FEE:

£9 for BGA members entering before 5 November 2008  
£5 for children, students, pensioners and unemployed  
Add £2 if you are not a member of the BGA.  
Add £3 if you enter after midnight on 4 November 2008

PRIZES: Prizes for Wanstead 2008 champion, best improver from Wanstead 2007, and for four wins

GETTING THERE: Central line underground to Wanstead (short walk) or by road to The Green, Wanstead (off A12).

---

**Entry: ideally, send the following details by email to [Wanstead2008@mac.com](mailto:Wanstead2008@mac.com)**

Name, telephone, club, rank, BGA membership number, any concession claimed

**If you must write: Wanstead 2008, 43 Dinsdale Road, London SE3 7RJ (no need to send a cheque, please just pay on the day). Same details as above, plus address.**

BGA Mobile phone number on the day: 0750 655 5366