



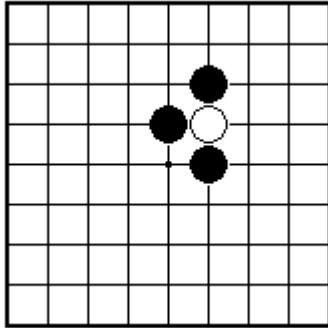
# BRITISH GO ASSOCIATION

## CERTIFICATE LEVEL 1 - SHEET 1

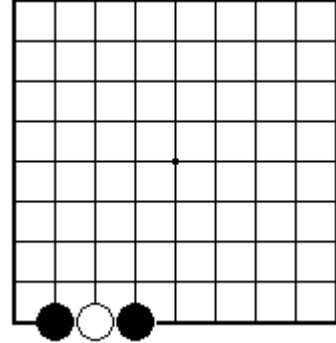


### CAPTURING STONES

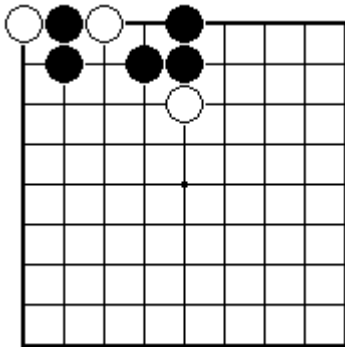
NAME:



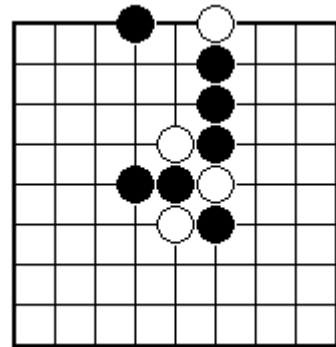
Black to play and take off a white stone.



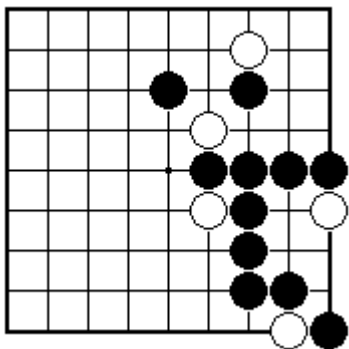
Black to play and take off a white stone.



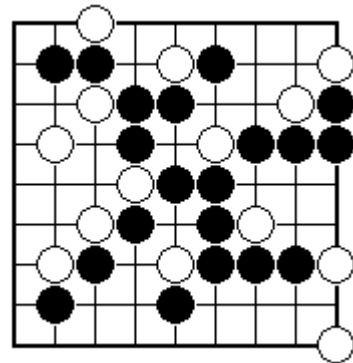
Black to play and take off a white stone.



Black to play and take off a white stone.



Black to play and take off a white stone.



Black to play and take off a white stone.



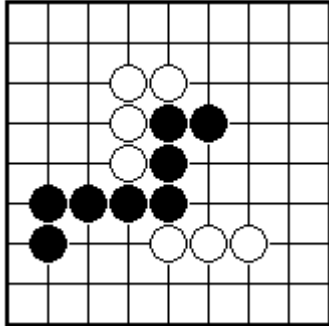
# BRITISH GO ASSOCIATION

## CERTIFICATE LEVEL 1 - SHEET 2

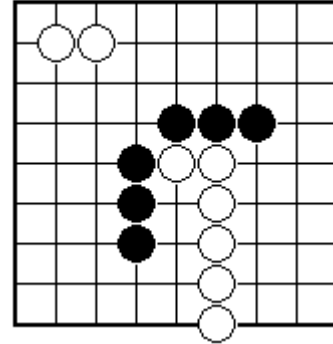
### GROUPS AND LIBERTIES



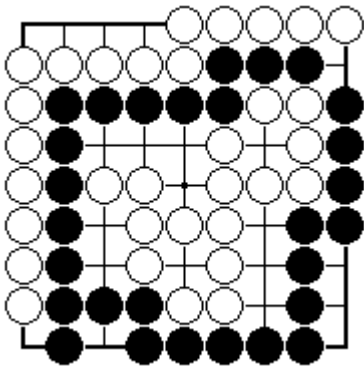
NAME:



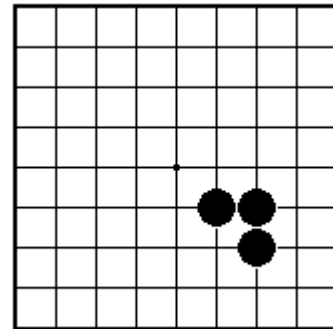
Are the black stones all connected together?



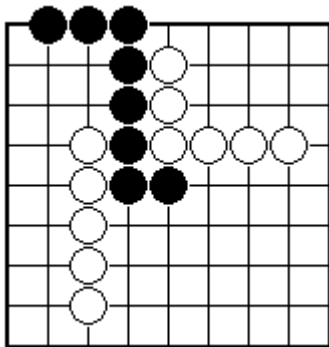
Are the black stones all connected together?



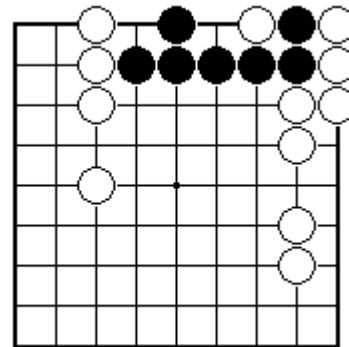
Are the black stones all connected together?



How many liberties does the black group have?



How many liberties does the black group have?



How many liberties does the black group have?



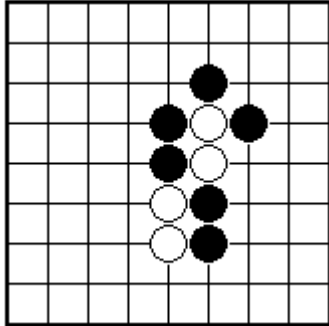
# BRITISH GO ASSOCIATION

## CERTIFICATE LEVEL 1 - SHEET 3

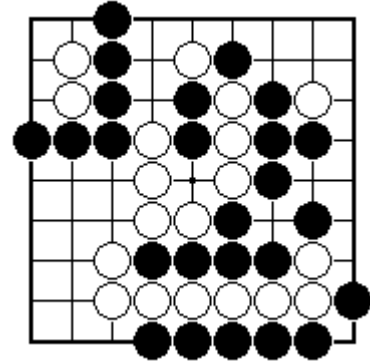
### CAPTURING GROUPS OF STONES



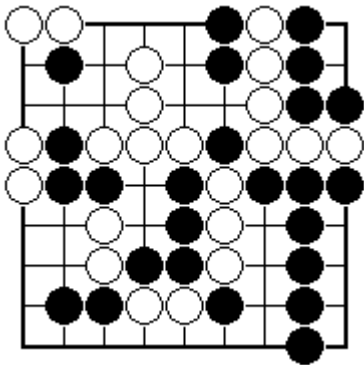
NAME:



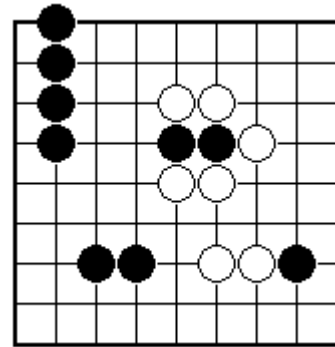
Black to play and take off two white stones.



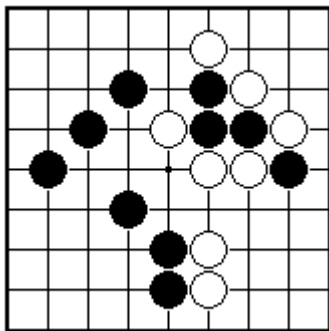
Black to play and take off some white stones.



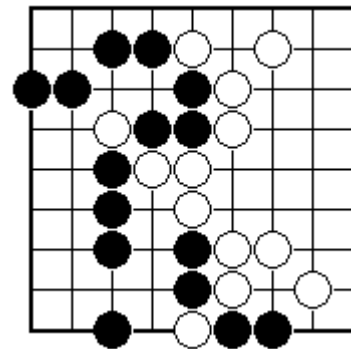
Black to play and take off some white stones.



Black to play and rescue the stones in atari.



Black to play and rescue the stones in atari.



Black to play and rescue the stones in atari.



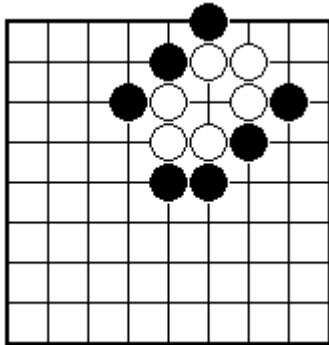
# BRITISH GO ASSOCIATION

## CERTIFICATE LEVEL 1 - SHEET 4

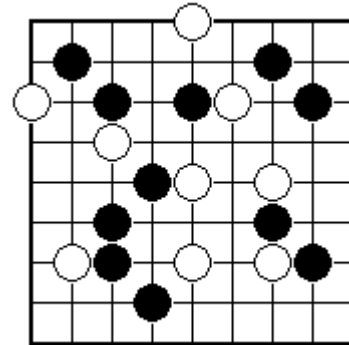


### ATARI

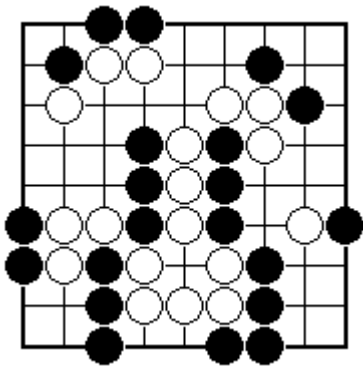
NAME:



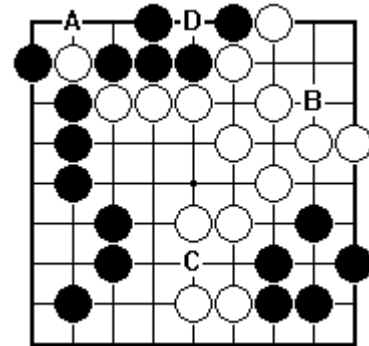
Black to play and put some white stones in atari.



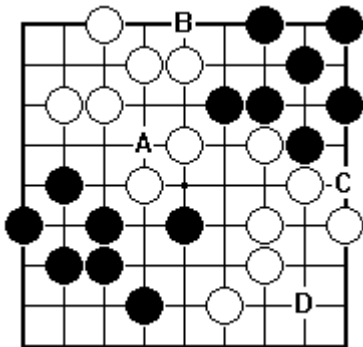
Which is the white stone that Black can put in atari?



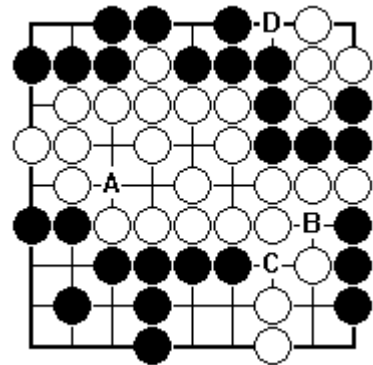
Black to play and put some white stones in atari.



Which black play would put Black's own stones in atari - is it A, B, C or D?



Which black play would put Black's own stones in atari - is it A, B, C or D?



Which black play would put Black's own stones in atari - is it A, B, C or D?



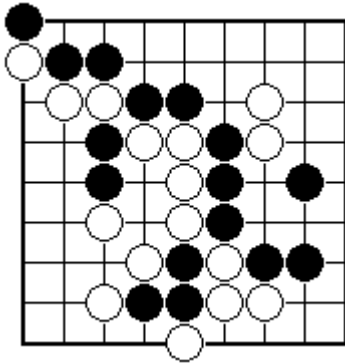
# BRITISH GO ASSOCIATION

## CERTIFICATE LEVEL 1 - SHEET 5

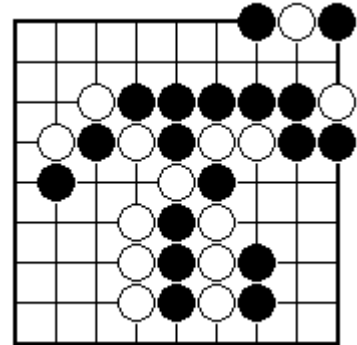
### MORE ABOUT ATARI AND CAPTURING



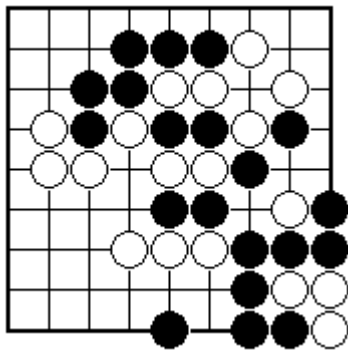
NAME:



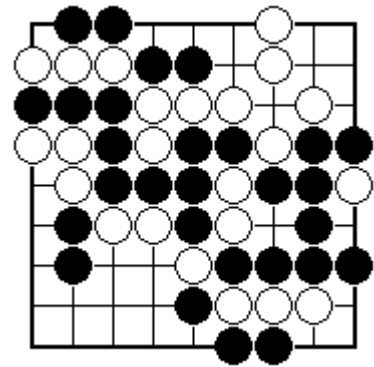
How many stones are in atari? Mark them all.



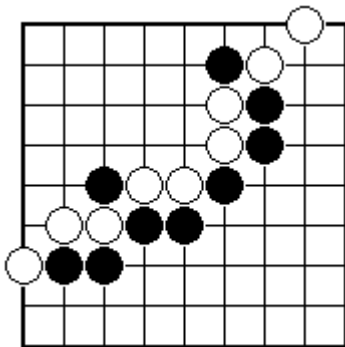
How many stones are in atari? Mark them all.



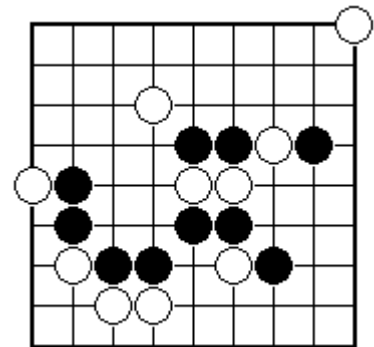
Mark the stones that should have been taken off.



Which stones are captured and should be taken off?



Show all Black plays which would put White in atari.



Show all Black plays which would put White in atari.

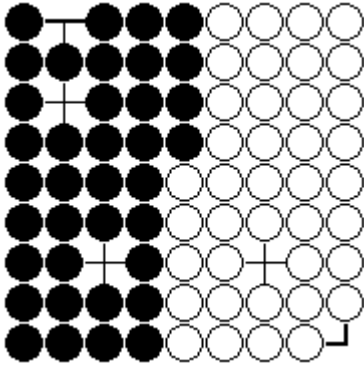


# BRITISH GO ASSOCIATION CERTIFICATE LEVEL 1 - SHEET 6

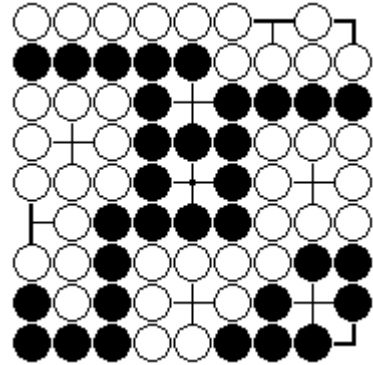


## COUNTING THE SCORE

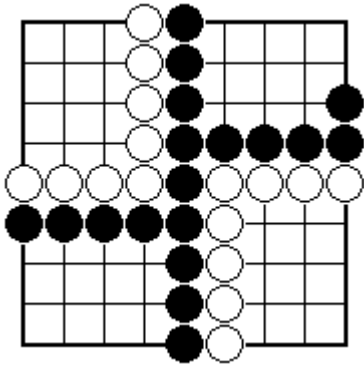
NAME:



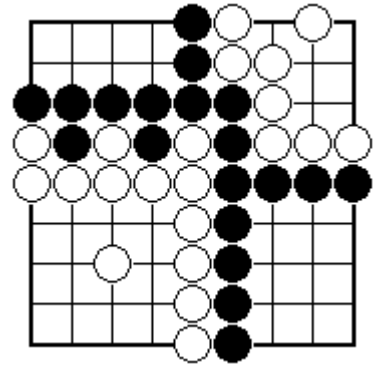
If no stones have been captured, what is the score?



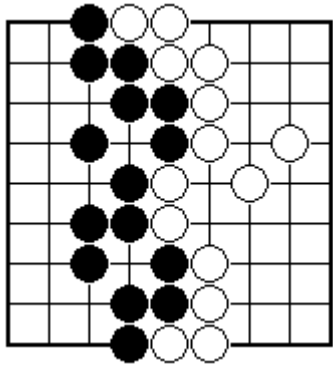
If no stones have been captured, what is the score?



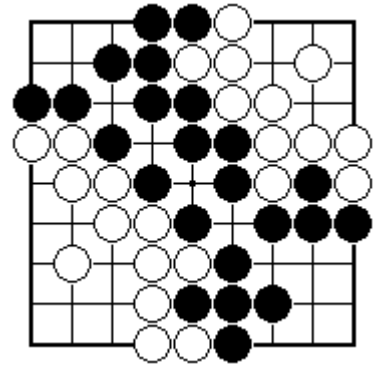
If no stones have been captured, what is the score?



If no stones have been captured, what is the score?



If no stones have been captured, what is the score?



If no stones have been captured, what is the score?



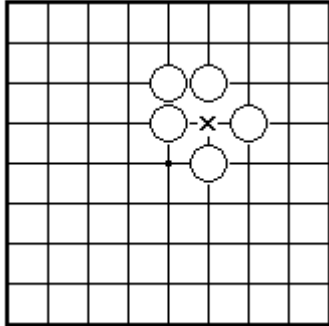
# BRITISH GO ASSOCIATION

## CERTIFICATE LEVEL 1 - SHEET 7

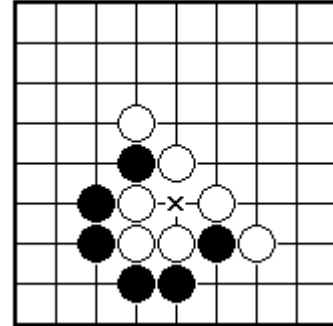


### THE SUICIDE RULE

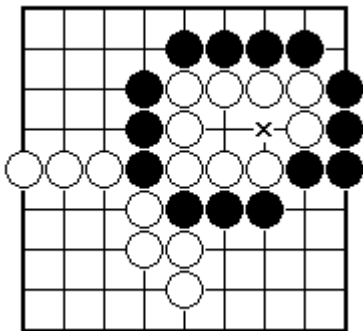
NAME:



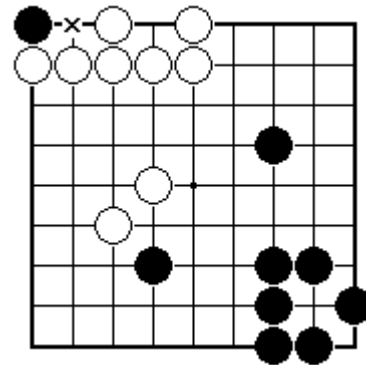
Is Black allowed to play at the place marked x?



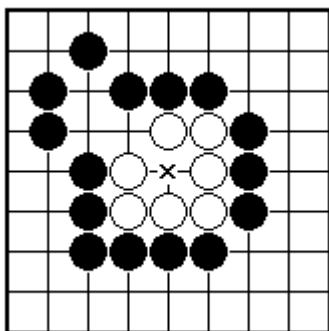
Is Black allowed to play at the place marked x?



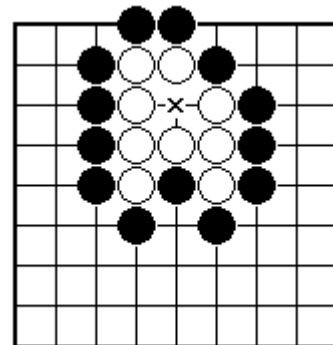
Is Black allowed to play at the place marked x?



Is Black allowed to play at the place marked x?



Is Black allowed to play at the place marked x?



Is Black allowed to play at the place marked x?



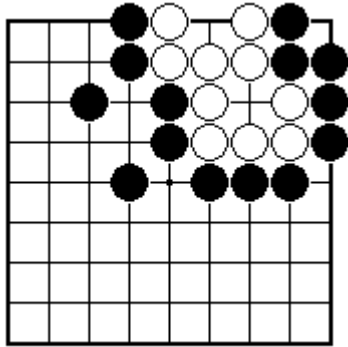
# BRITISH GO ASSOCIATION

## CERTIFICATE LEVEL 1 - SHEET 8

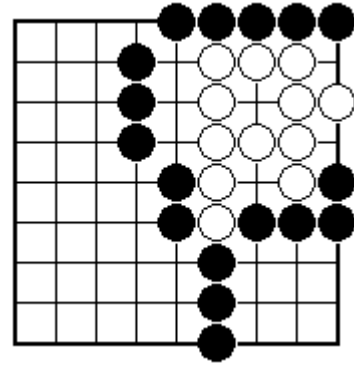


TWO EYES

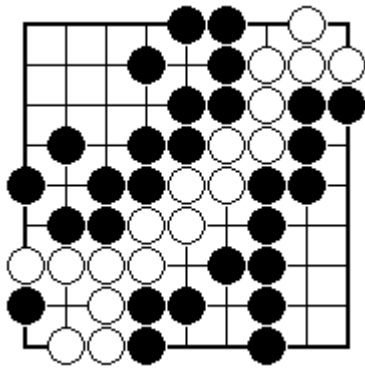
NAME:



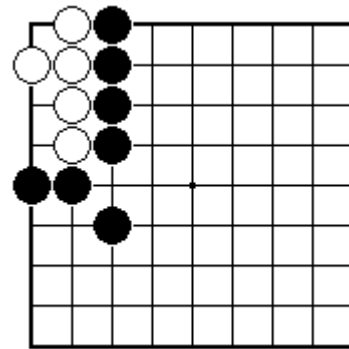
Has the white group got two eyes?



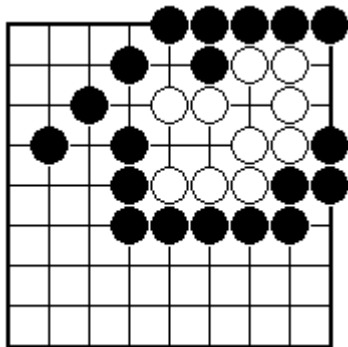
Has the white group got two eyes?



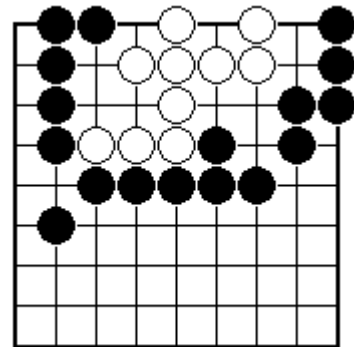
Has the white group got two eyes?



How can the white group make two eyes?



How can the white group make two eyes?



How can Black stop the white group making two eyes?





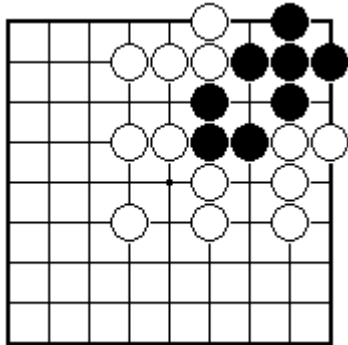
# BRITISH GO ASSOCIATION

## CERTIFICATE LEVEL 1 - SHEET 9

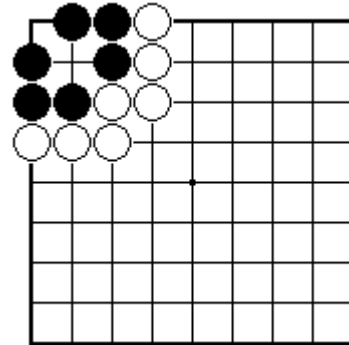
### REAL EYES AND FALSE EYES



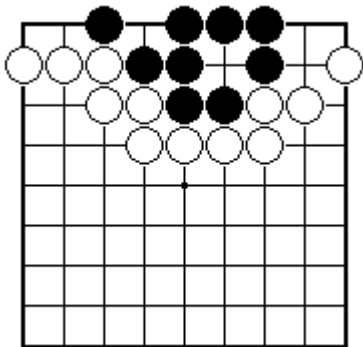
NAME:



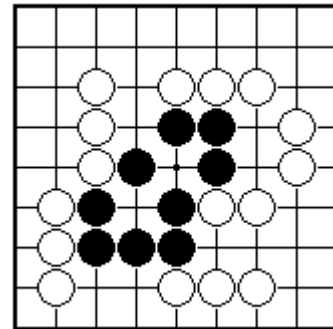
Has the black group got two real eyes?



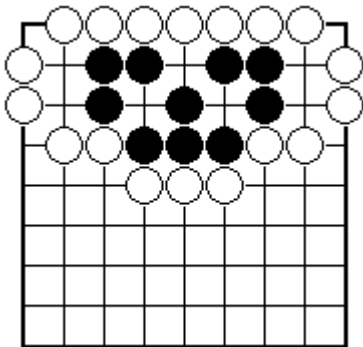
Has the black group got two real eyes?



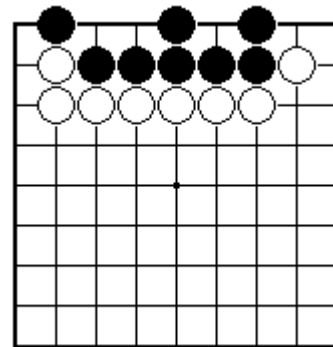
Has the black group got two real eyes?



How can White stop Black from making two real eyes?



How can Black make sure that the black group has two real eyes?



How can White stop the black group making two real eyes?



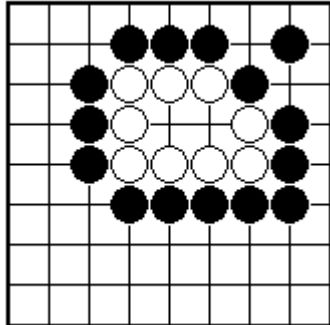
# BRITISH GO ASSOCIATION

## CERTIFICATE LEVEL 1 - SHEET 10

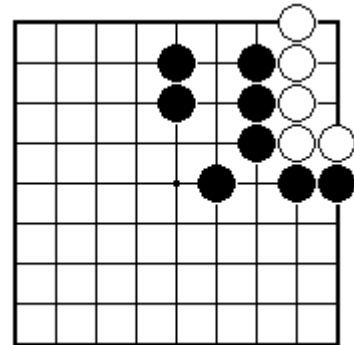
### ONE BIG EYE



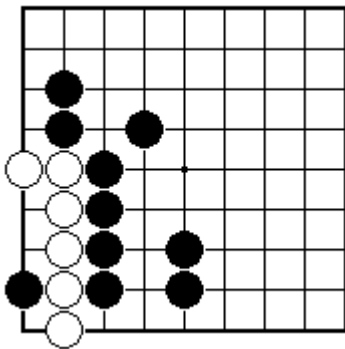
NAME:



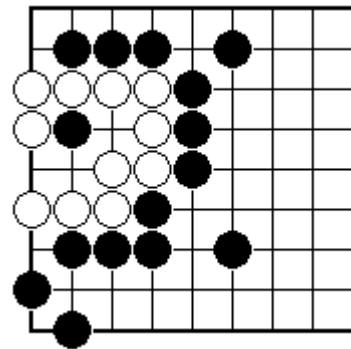
Can the white group make two eyes?



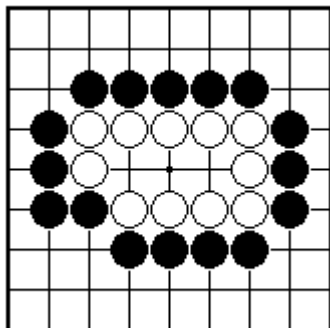
How can the white group make two eyes?



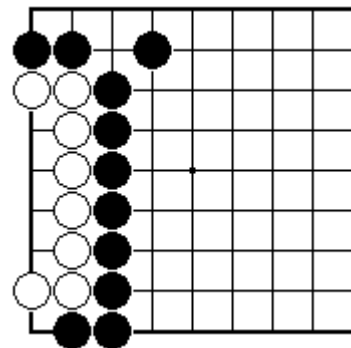
How can the white group make two eyes?



How can the white group make two eyes?



How can Black stop White from making two eyes?



Can Black stop White from making two eyes?



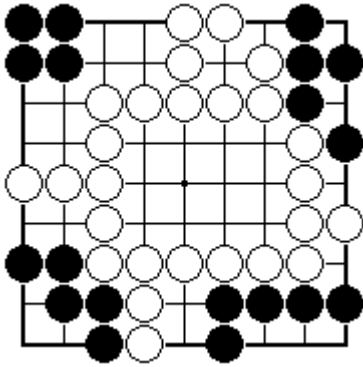
# BRITISH GO ASSOCIATION

## CERTIFICATE LEVEL 1 - SHEET 11

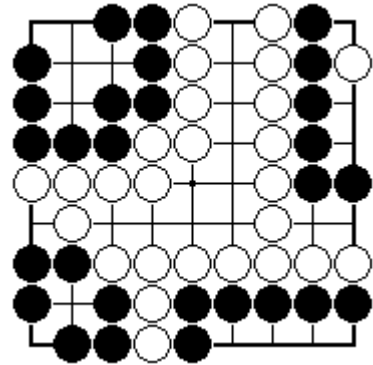
### SHAPES FOR MAKING TWO EYES



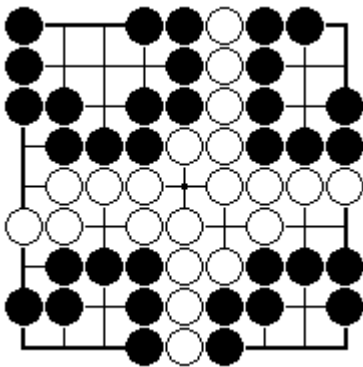
NAME:



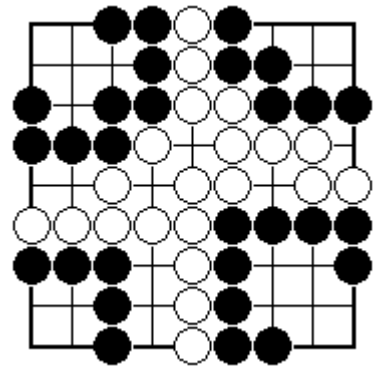
There are four black groups. Which are alive, dead, unsettled?



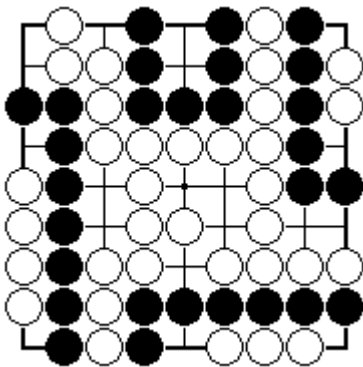
There are four black groups. Which are alive, dead, unsettled?



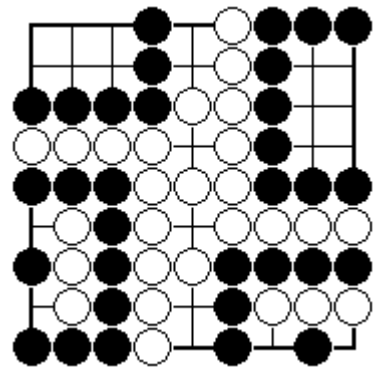
There are four black groups. Which are alive, dead, unsettled?



There are four black groups. Which are alive, dead, unsettled?



There are four black groups. Which are alive, dead, unsettled?



There are four black groups. Which are alive, dead, unsettled?