

22nd Milton Keynes Go Tournament

Sunday 4th July 2010, The Open University, Walton Hall

A three round McMahon tournament, held in the Hub Theatre, at the Open University.

As last year (but unlike previous years) lunch is not included in the tournament fee. There are no places to eat in the vicinity of the OU unless you drive, so you are advised to bring your own lunch. Light refreshments (coffee/tea, squash, biscuits) will be available throughout the day.

Rules

Three rounds. BGA rules.
65 minutes time limit.
30 stones in 5 minutes overtime.
McMahon system (even games where possible).
Prizes for 3 wins.

Side events

Team tournament. 'Milton Keynes' Go.

Schedule

Registration	09:30–10:15
Round one	10:20
Lunch	~12:30
Round Two	13:30
Round Three	16:00
Prize giving	~18:30

Entry Fee

Basic fee	£10
Discount for BGA members	£3
Discount for concessions	£3
Surcharge for entry on the day	£2

Venue

The Hub Theatre
The Open University
Walton Hall
Milton Keynes
MK7 6AA

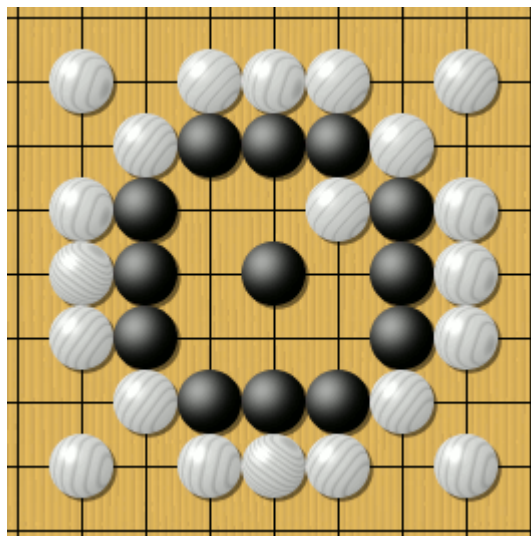
Plenty of parking on-site. It is probably best to use Church Parking.

The Hub theatre used to be called the Old lecture theatre. That is where the tournament has been held most years in the past.

OU maps: <http://www3.open.ac.uk/contact/> [Google map](#)

How to enter

Please contact Tim Hunt, T.J.Hunt@open.ac.uk, 07850 119939 with your Name, Club, Grade (if known) and contact information. Please pay when you arrive.



At the risk of pandering to your prejudices, here is a roundabout-shaped problem. Status?



Walton hall. The Hub theatre is behind. Sadly the cedar tree on the right died last year and is now a stump.