

26th Milton Keynes Go Tournament

Saturday 28th June 2014 The Open University, Walton Hall

A three round McMahon tournament, held in the Sports pavilion, at the Open University.

You are advised to bring your own lunch to eat in the very pleasant OU grounds. It will be a short drive or a moderate walk if you wish to buy lunch on the day.

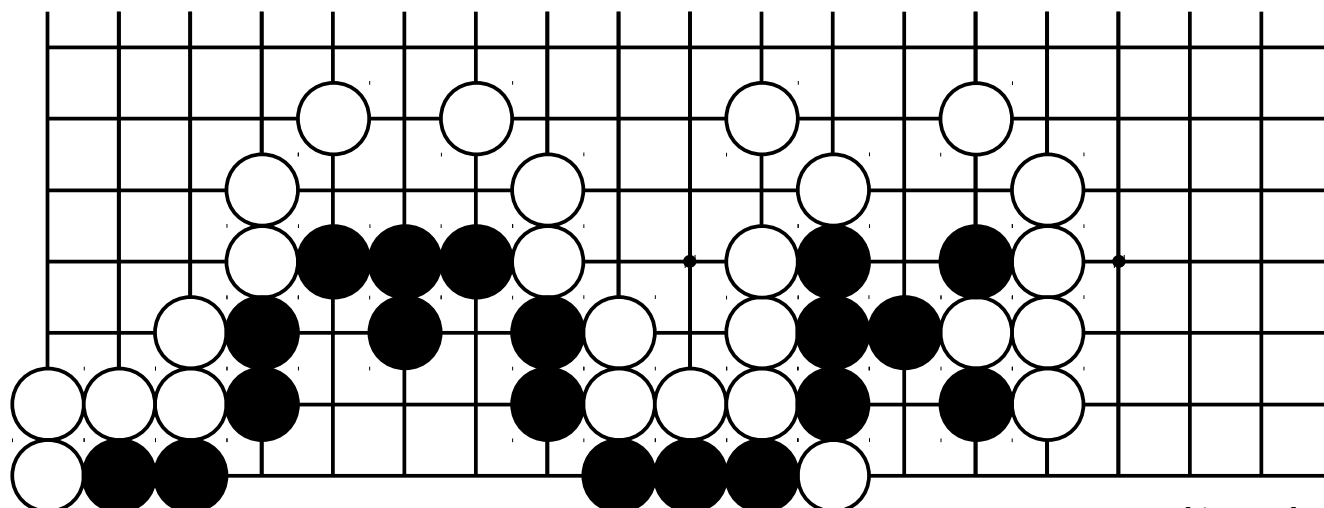
Light refreshments (coffee/tea, squash and biscuits) will be available throughout the day.

Schedule

Registration	09:30 – 10:15
Round one	10:20
Lunch	~12:30
Round Two	13:30
Round Three	16:00
Prize giving	~18:30

Rules

BGA rules
Three rounds
Prizes for 3 wins
65 minutes time limit
30 stones in 5 minutes overtime
McMahon system (even games where possible)



White to play.

Venue

The Sports Pavilion
The Open University
Walton Hall
Milton Keynes
MK7 6AA

There is plenty of parking on-site.
Please use Inner East Parking.

[Google map](#)

Side events

Team tournament
'Milton Keynes' Go

Entry fee

Basic fee	£7
Discount for BGA members	£2
Discount for concessions	£2
Surcharge for entry on the day	£2

*Problem by
Andrew Kay
British Go
Champion.*

How to enter

Please contact Ben Ellis, ben.ellis@softweyr.co.uk, 07769 335 219 with your name, club, grade (if known) and contact information. Please pay when you arrive on the day.

OU maps: <http://www.open.ac.uk/about/main/faculties-and-centres/milton-keynes-campus>

To plan a bus from the station: <http://www.travelinesoutheast.org.uk/> from MK9 1BB to MK7 6AA