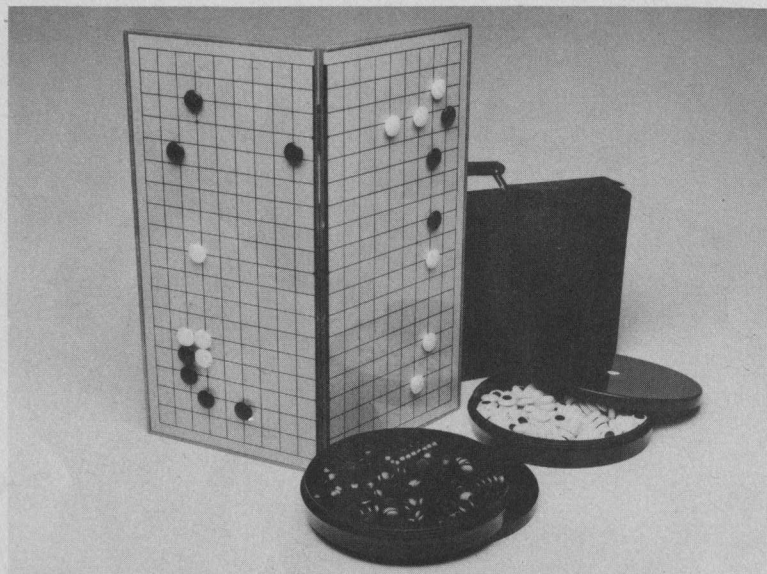


De-Luxe Magnetic Go Set

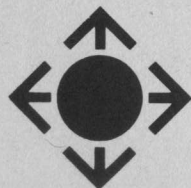


A portable go set that is small enough to carry but large enough to play on. The board is sturdy and when open measures 32x30cms. The plastic stones have a smooth finish and the magnets are securely set in the backs.

Ideal for use in a train, plane, boat or car - or for studying in bed. The whole packs into a black carrying case 17x34cms. Weight: 1½ kilos approx.

Price: £15.40 PLUS Postage 70p

The Go Centre stocks a complete range of the best quality go equipment and books, including Japanese language titles. Please write for a free price list.



London Go Centre
18 Lambolle Place, London NW3
Tel. 01-586 1830

BRITISH GO JOURNAL



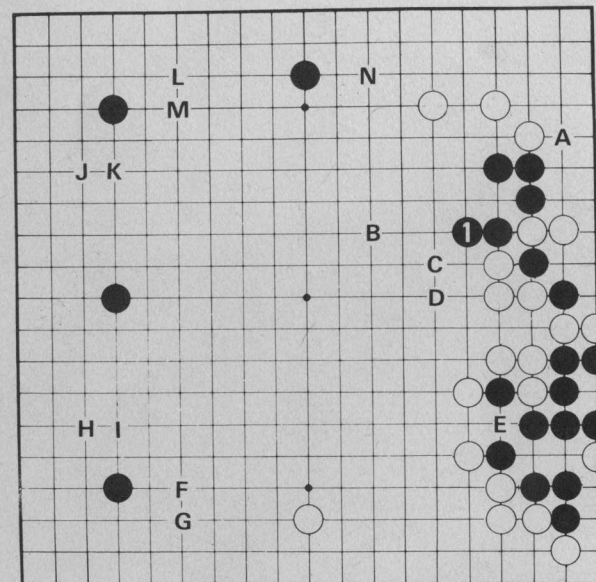
Editor: P T MANNING, BRISTOL

NUMBER 39

Price: 30p

JANUARY 1978

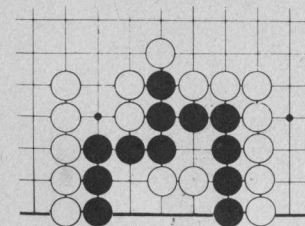
Fuseki Problem



Answer on Page 14

Black has just played at 1 to strengthen his upper group on the right hand side. Was this wise? Where should white reply? How strong are the players.

Spot The Blunder



White to play.

Answer on Page 15

