

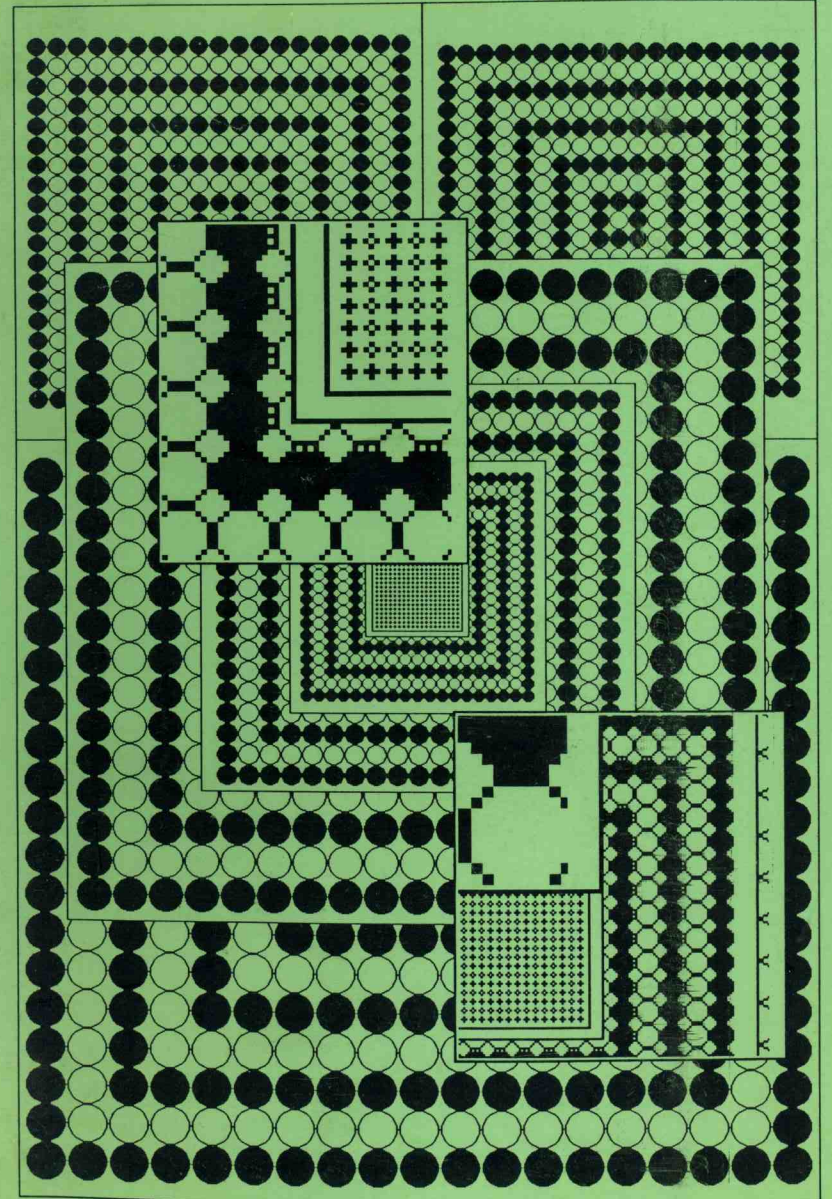
British Go Journal

碁

Number 78

Spring 1990

Price £1.50



British Go Association

President: Norman Tobin, 10 West Common Rd, Uxbridge, Middlesex. (0895-30511)

Secretary: Tony Atkins, 37 Courts Rd, Earley, Reading, Berks. (0734-68143)

Treasurer: T. Mark Hall, 21 Terrapin Rd, Balham, London SW18 8QW. (01-675-1363)

Membership Secretary: Brian Timmins, The Hollies, Wollerton, Market Drayton, Salop. TF9 3LY (0630-84292)

Book distributor: Bob Bagot, 54 Massey Brook Lane, Lymm, Cheshire WA13 0PH (092-575-3138)

Tournament Coordinator: Alex Rix, 11 Brent Way, West Finchley, London N3 1AJ (01-346-3303)

Journal Editor: B. Timmins (see above)

Schools Coordinator: Alex Eve, 17 St Peter's Rd, Brackley, Northants NN13 5DB (0280-704-561)

Newsletter Editor: Steve Draper, 8a Beaconsfield Rd, Basingstoke, Hants (0256-463775)

Analysis Service: Simon Goss, ICL, Lovelace Rd, Bracknell, Berks RG12 4SN

Archivist: Keith Rapley, Lisheen, Wynnswick Rd, Seer Green, Bucks HP9 2XW (0494-65066)

Contents

Coming Events	4
Glossary	4
Sponsorship	5
This Is Go The Natural Way!	6
Anglo-Japanese Friendship Match	12
Teaching Problem: Solution	13
Past Masters - 2	15
Club List	16
Two Single-Figure Kyu Games	18
Book Review	21
Crossword	22
Kosumi Problems	23
Draught Letter	24
Don't Play Go	24
Starting Colours	25
Foot Voting	29
Clubs & Tournaments	29
Price List	31

Cover: supplied by R. Terry, and Dave Dyer (Symbolics Corporation, USA).

The views expressed in this Journal are not necessarily those of the BGA or of the Editor.

© 1990 British Go Association. Items from this Journal may be reproduced for the purposes of promoting go, provided all such copies are attributed to the British Go Journal. All other rights reserved.

Editorial Team

Technical adviser: I. C. Sharpe
Diagrams: S. Draper, H. Williams
Regular Contributors: T. Atkins, T. Barker, A. Grant, T. M. Hall, F. Holroyd, M. Macfadyen, F. Roads, R. Terry, D. Williams
Distributor: K. Timmins

Editorial

After putting together a game editing program, I passed it on to Ian Sharpe, who did the really sophisticated work of making it produce good clear diagrams of the correct size for the Journal columns.

This means that there is no longer a special deadline for submission of diagrams. It should also mean the end of sticking little disks to a sheet of paper.

Steve Draper, who has his own program for diagrams, is still helping, but Patrick Myers has had to drop out. Many thanks to Patrick for past efforts, but consequently there is a great need for volunteers to help with diagram production.

If you have an IBM compatible computer, EGA, and GW Basic, and want to lighten the load for the rest of us, please write or phone.

The Tournament Levy

by T. Mark Hall

What is the purpose and reason for the BGA tournament levy? This is hardly the topic on everyone's lips at tournaments and congresses, but it has been raised by club secretaries and treasurers with the BGA treasurer and, since the levy has been amended with effect from 1st January 1990 and raised slightly, this may be the opportunity to tell all members how it operates.

When a tournament form is received by the BGA treasurer, his normal

practice is to send his own entry plus the levy form or to curse if he can't attend and send the form on its own.

The form asks the organiser to count up the number of people who attended and make payment for each full BGA member, student member and non-member for each round of the tournament. This has sometimes been waived where the organiser has genuinely shown that he would make no profit for the club if the levy was paid, and special arrangements are made concerning the London Open and the Northern tournaments. However, most tournaments pay the same standard amount. The question raised has been what does the levy cover and why do we charge it.

Each club that organises a tournament generally relies on the membership secretary to provide them with a list of clubs to which forms can be sent and forms are often distributed by the BGA with the Newsletter. Advance notice is also given both in the Journal and the Newsletter of forthcoming tournaments. The BGA also maintains a stock of boards, sets and clocks which are normally available for any tournament, and the BGA will also give assistance and advice to organisers if requested.

The levy has therefore been devised to cover all these services: the co-ordination of clubs and lists, the publicity and the provision of equipment and assistance. If we attempted to impose charges for each separately, we would find that difficult, and clubs might make attempts to avoid using the services thus provided. It is easier for all concerned to have a simple overall charge to cover everything.

If anyone has any further questions, please contact me.

